



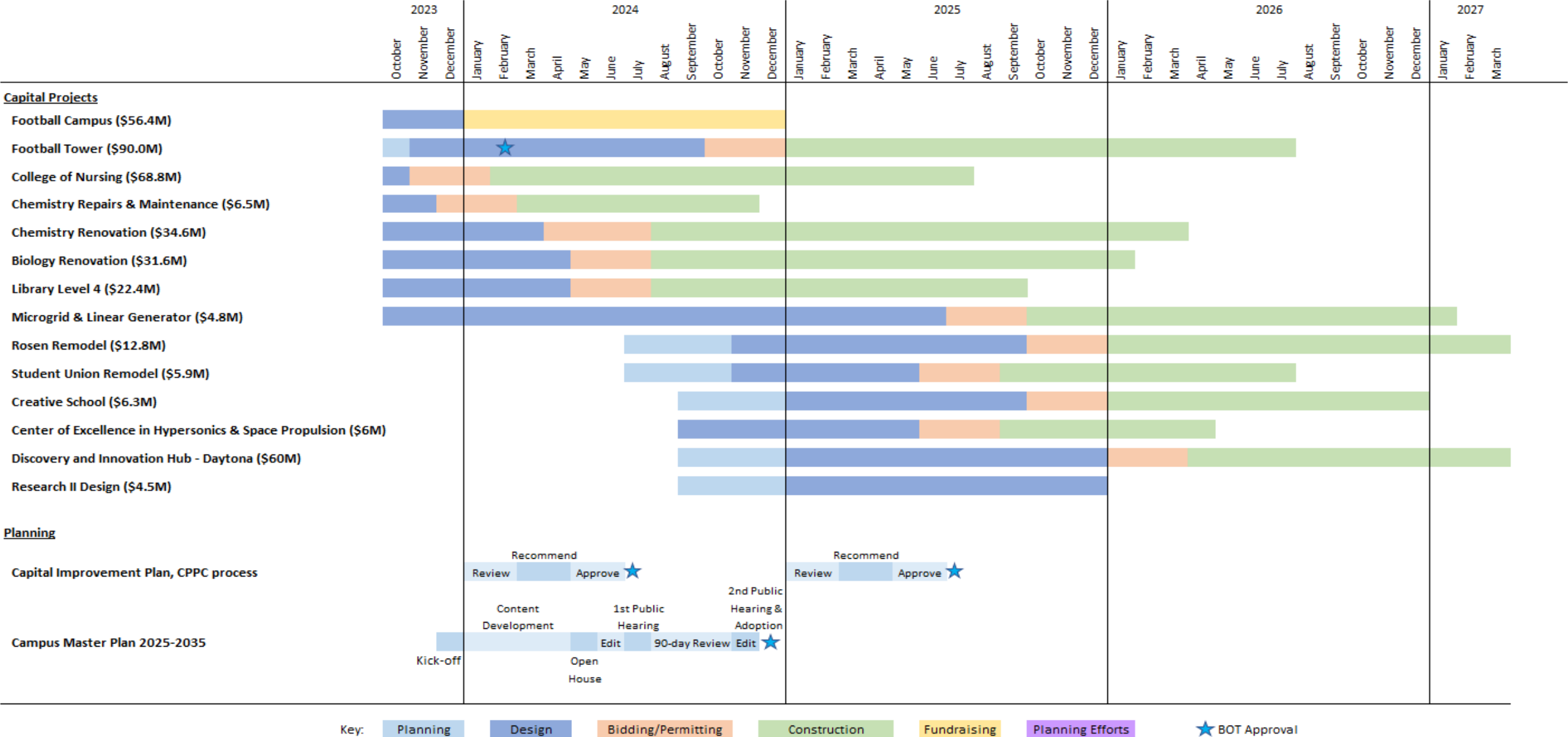
# **Comprehensive Report on Construction Related Activity**

---

Planning, Design and Construction



# PROJECT SCHEDULES





# **College of Nursing**

---

# COLLEGE OF NURSING PROGRESS

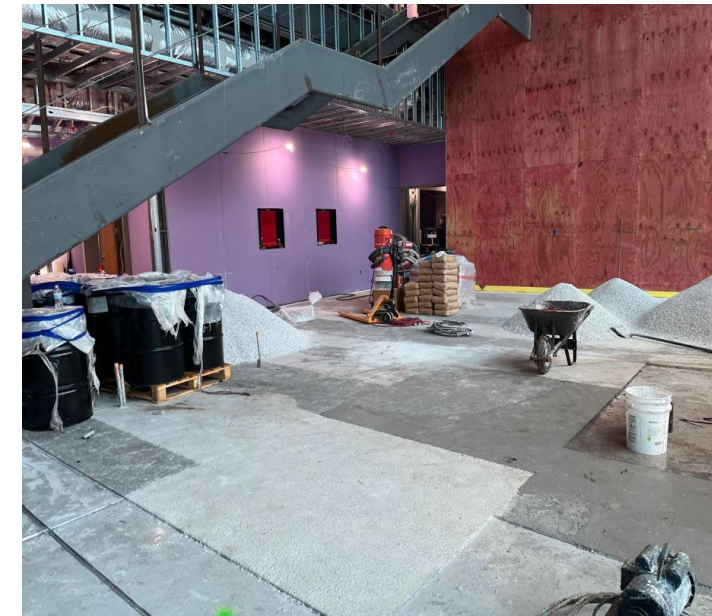
## PROJECT BUDGET- \$68.8M

- Federal Funds - \$29M
- Donations - \$24.5M
- PECO - \$14.7M
- Auxiliary - \$19K
- CF - \$500K



## PROJECT SCOPE

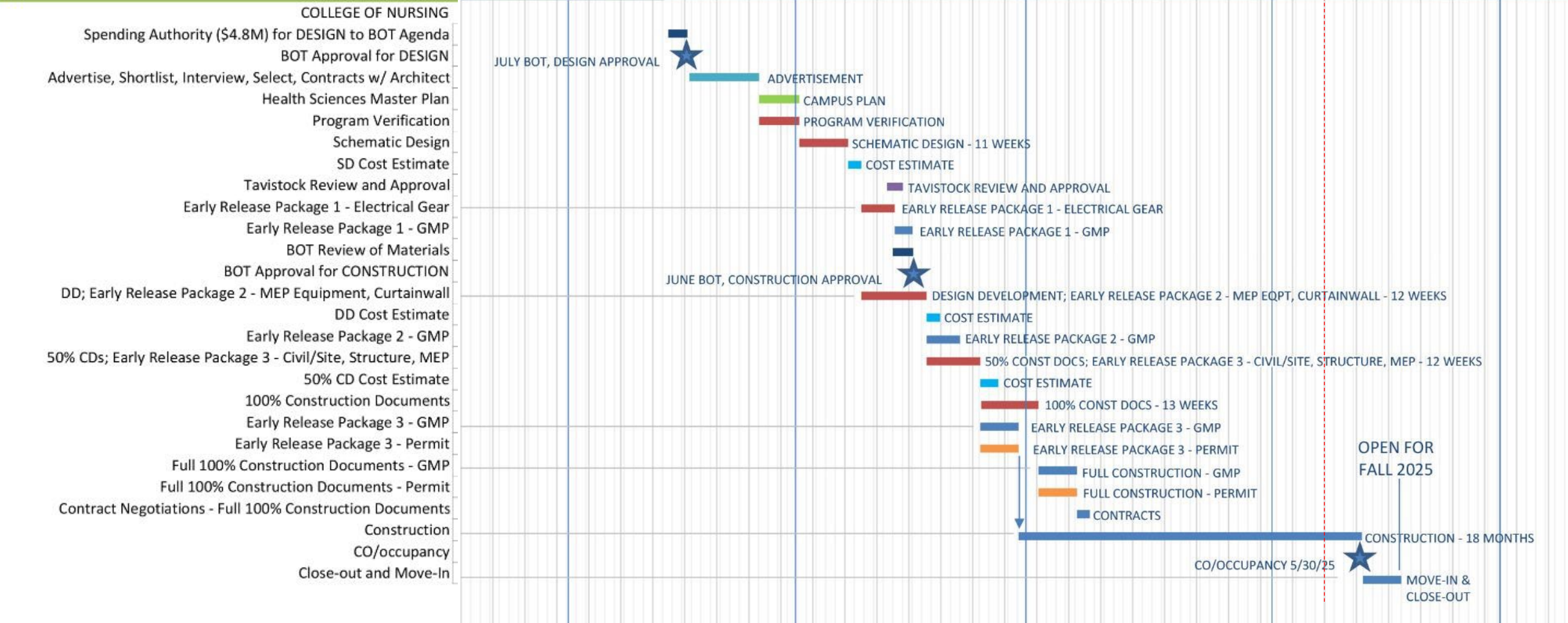
- Construction of a 90K GSF freestanding facility to house the College of Nursing on the UCF Academic Health Sciences Campus. Facility will provide classrooms, teaching labs, research labs, study space, and offices
- Renovation in progress with ~ % complete



COLLEGE OF NURSING SCHEDULE

2021 2022 2023 2024 2025

Task





# **Library Fourth Floor Renovation**

---



# LIBRARY - FOURTH FLOOR RENOVATION

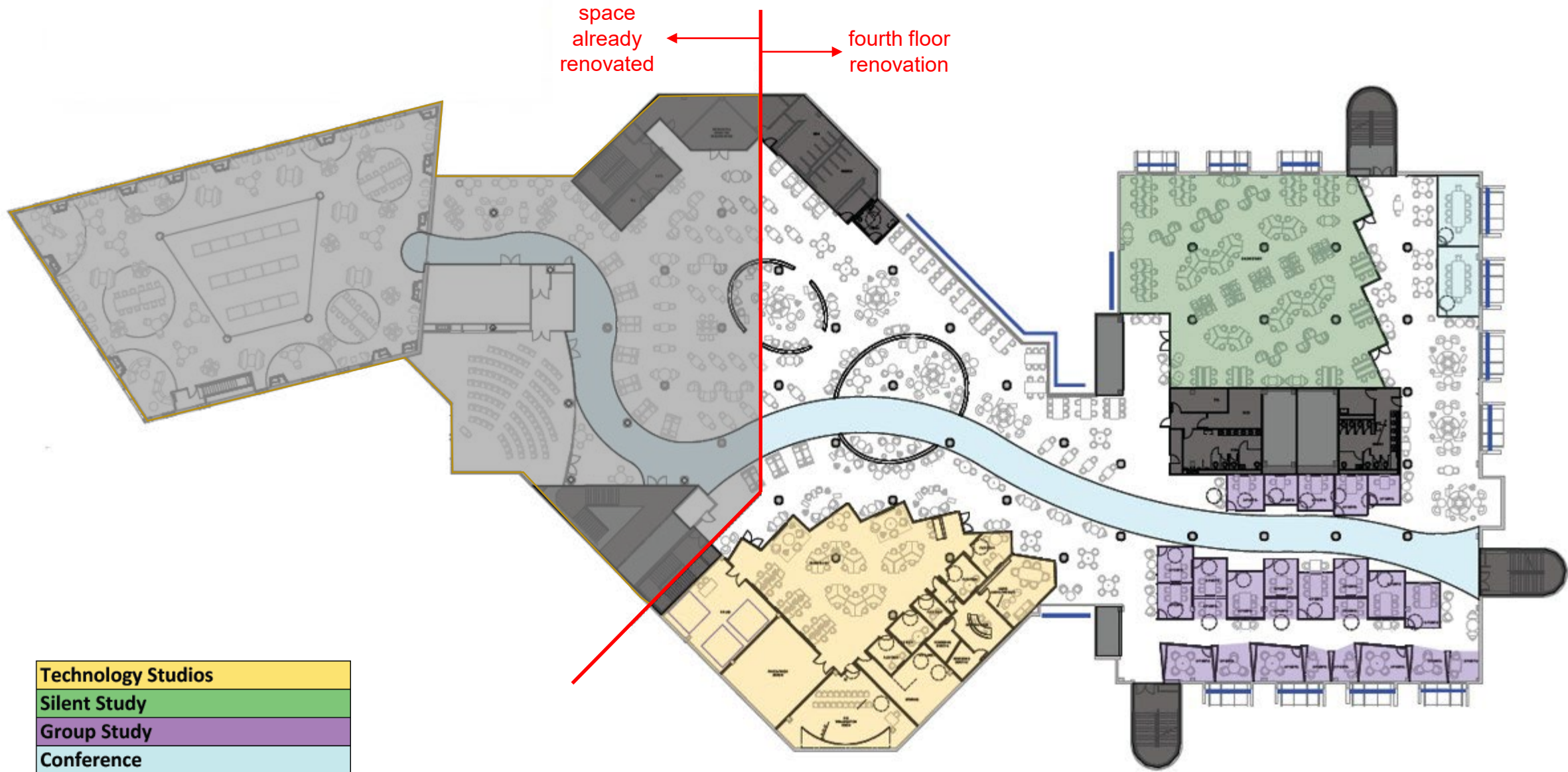
PROJECT BUDGET- \$22.4M (CITF)

## PROJECT SCOPE

- Student study focus – open study, quiet study, group study and conference rooms; once complete will add over 300 new seats bringing the new total ~ 1,000
- Student Technology Studios – visualization room, photo/video studio, recording rooms, audio/podcast room, flex rooms
- Full replacement of the level 4 MEP systems, as well as the level 2 Air Handling Unit
- Renovation in progress with ~ 60% complete



# Fourth Floor - Renovation







# **Chemistry Biology**

---

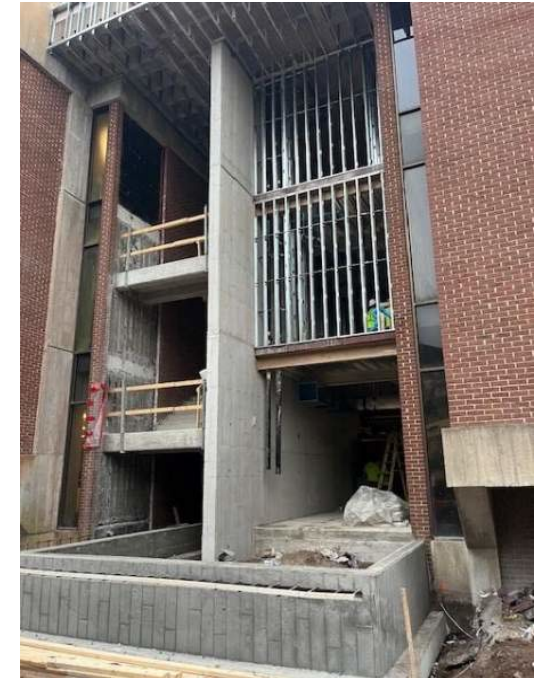
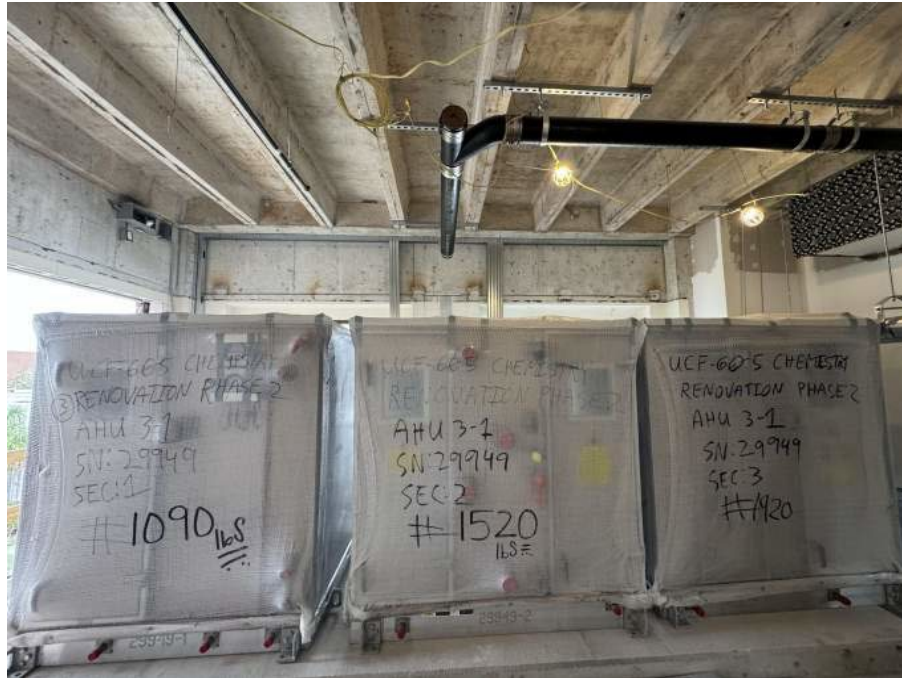
# CHEMISTRY

## PROJECT BUDGET- \$41.1M

- E&G CF - \$5M
- Federal Funds - \$10M
- PECO - \$16.1M
- Auxiliary - \$10M

## PROJECT SCOPE

- 49,073 gsf existing building plus 4,800 gsf new support area (exit stairs, restrooms, prep rooms)
- Multi-phase remodel/renovation
  - New mechanical and controls for the entire building, adds organic chemistry labs, solves life-safety issues, modernizes labs
  - Phase 1 complete
  - Phase 2A under GMP for approximately \$25M, renovation in progress with ~45% complete



# BIOLOGY

## PROJECT BUDGET- \$36.6M

- E&G CF - \$5M (completed)
- Federal Funds - \$21.6M
- E&G CF - \$10M

## PROJECT SCOPE

- Completed scope
  - 3 AHUs, pumps, valves
- Remaining Scope
  - New AHU-1, AHU-5, boilers, lab exhaust fans, pumps, fire pump/controller, elevator, fire alarm system, interior lighting and ceiling grid, electrical panels, door hardware, renovate restrooms, add occupancy and humidity sensors, gas shut-off valves, new finishes, fume hoods, counters/countertops, additional miscellaneous upgrades
  - Under GMP for approximately \$25.5M, renovation in progress with ~ 40% complete





# Football Tower

---

# FOOTBALL TOWER

**PROJECT BUDGET - \$90M**

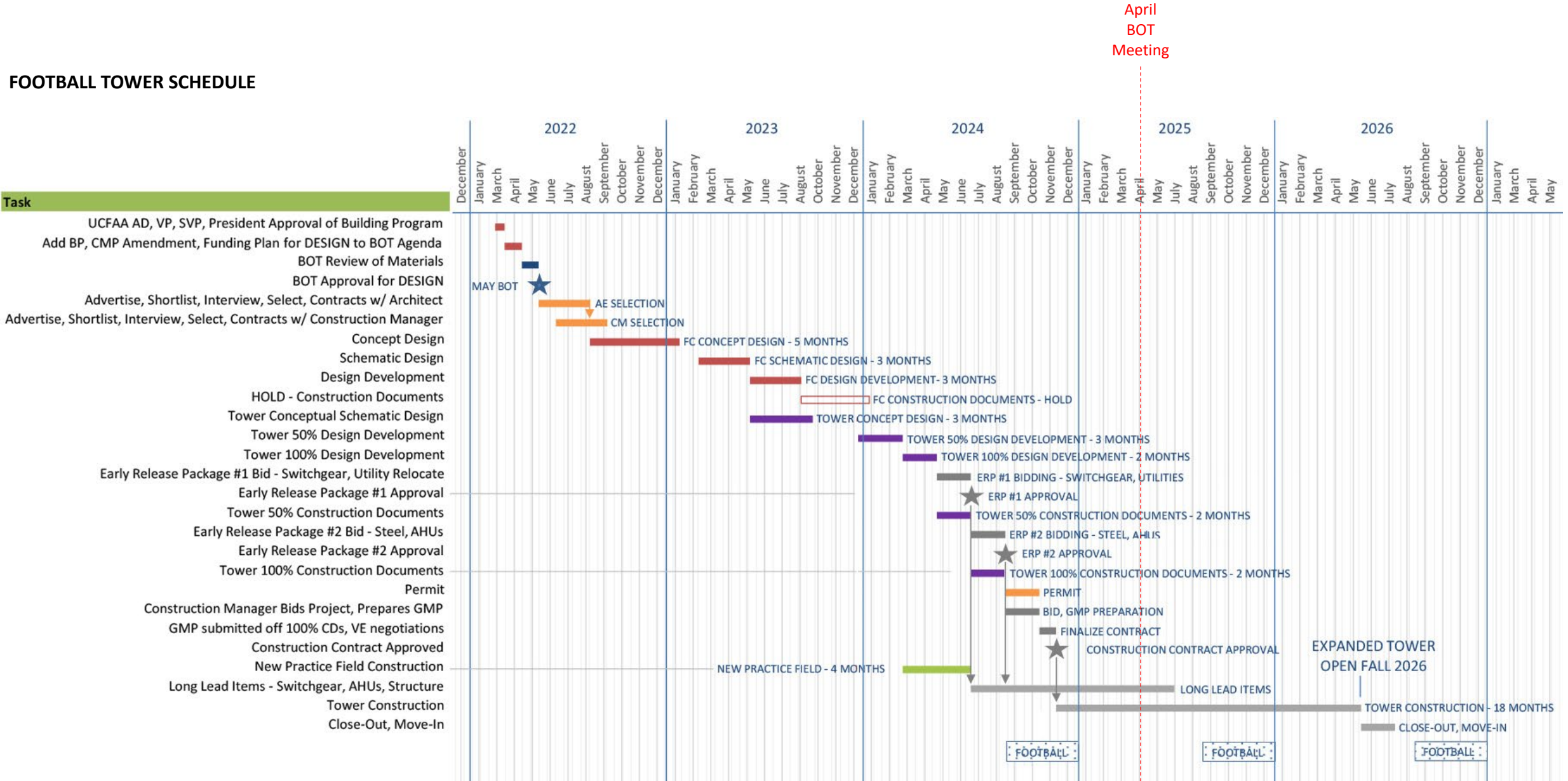
## **PROJECT SCOPE**

- 86,500-square-foot phased renovation and expansion of UCF's stadium west tower from December 2024 to July 2026, maintaining functionality during the 2025 football season while adding larger suites, outdoor sky suites, and increased club space for the 2026 season
- GMP for approximately \$63.5M, renovation in progress with ~ 8% complete

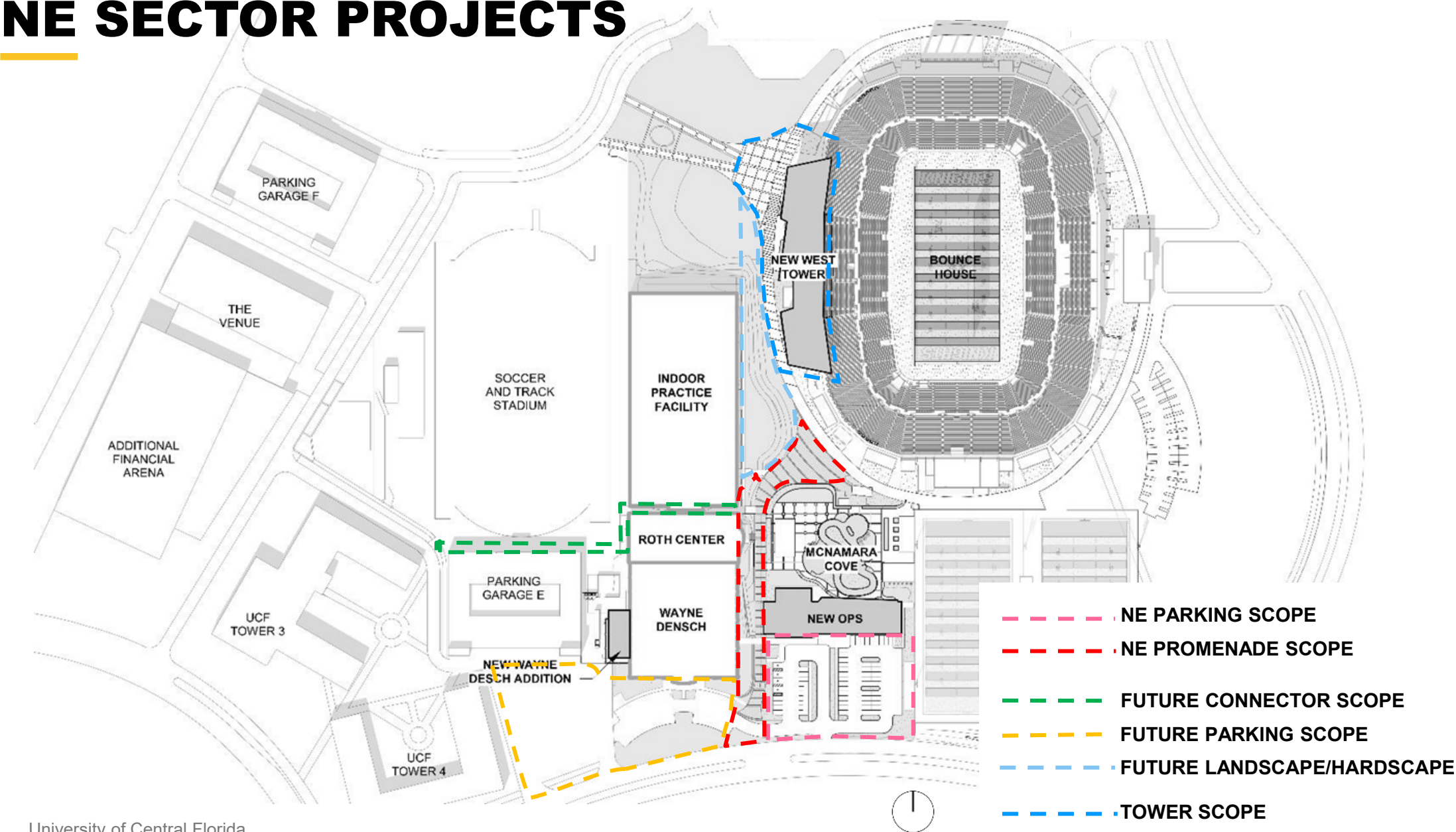




FOOTBALL TOWER SCHEDULE



# NE SECTOR PROJECTS





# **FY 2024-25 Q2 PROJECT SUMMARY**

---

**PROJECT VALUE  
UNDER CURRENT  
MANAGEMENT**

As of January 1, 2025

**\$466.9M**

**PROJECT VALUE  
COMPLETED**

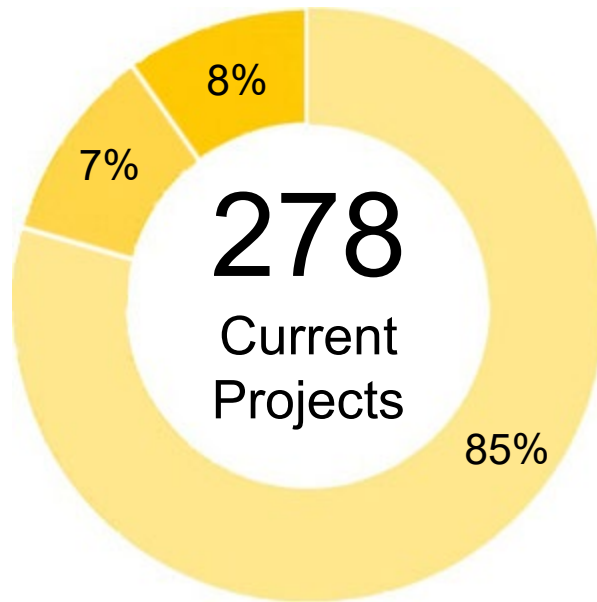
**FY 2024-25**

July 1, 2024 to January 1, 2025

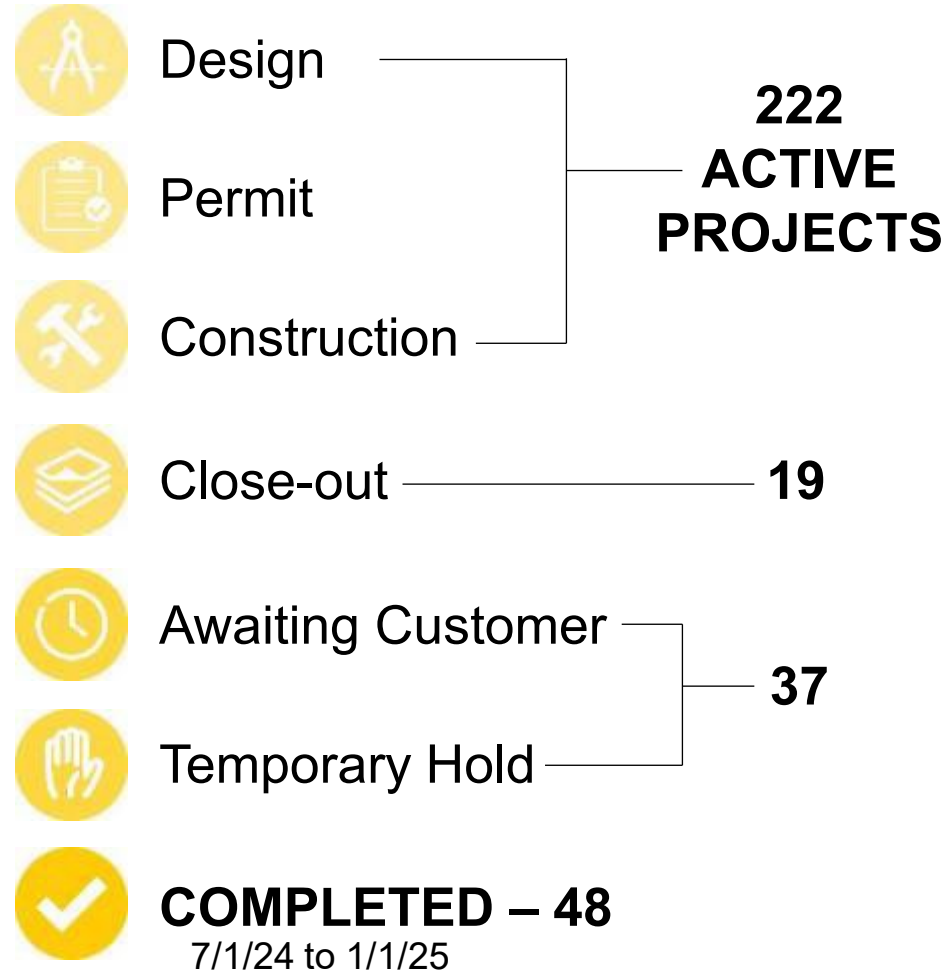
**\$7.2M**

# PROJECTS BY PHASE

As of January 1, 2025



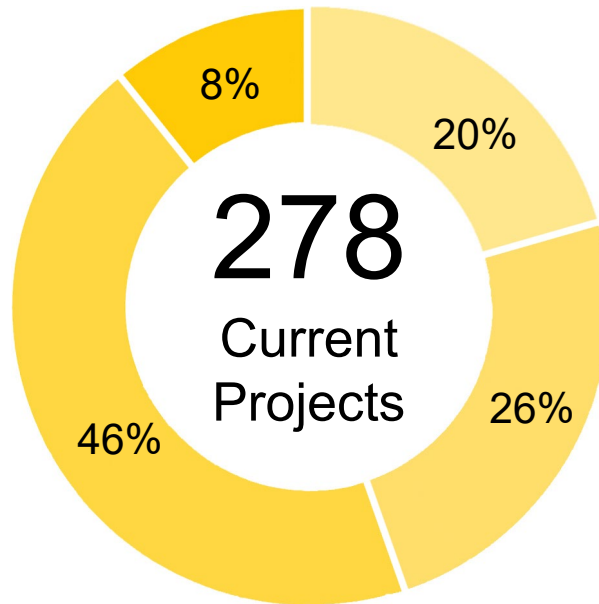
Current Projects Only  
Total above does not include  
Completed or Cancelled Projects





# PROJECTS BY COST

As of January 1, 2025



Current Projects Only  
does not include Completed Projects,  
or projects with budgets TBD

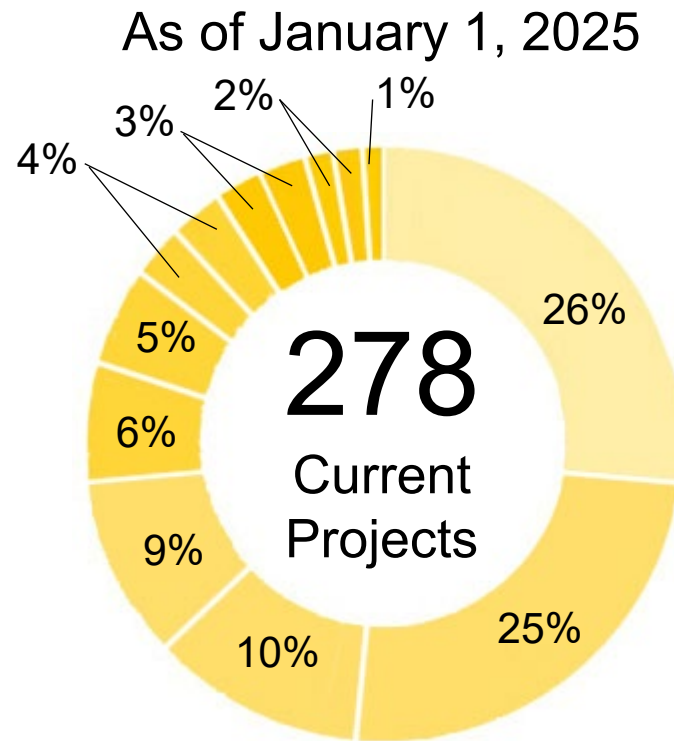
**20% UNDER \$50K**  
(42 PROJECTS)

**26% \$50K to \$200K**  
(54 PROJECTS)

**46% \$200K to \$4M**  
(94 PROJECTS)

**8% OVER \$4M**  
(16 PROJECTS)

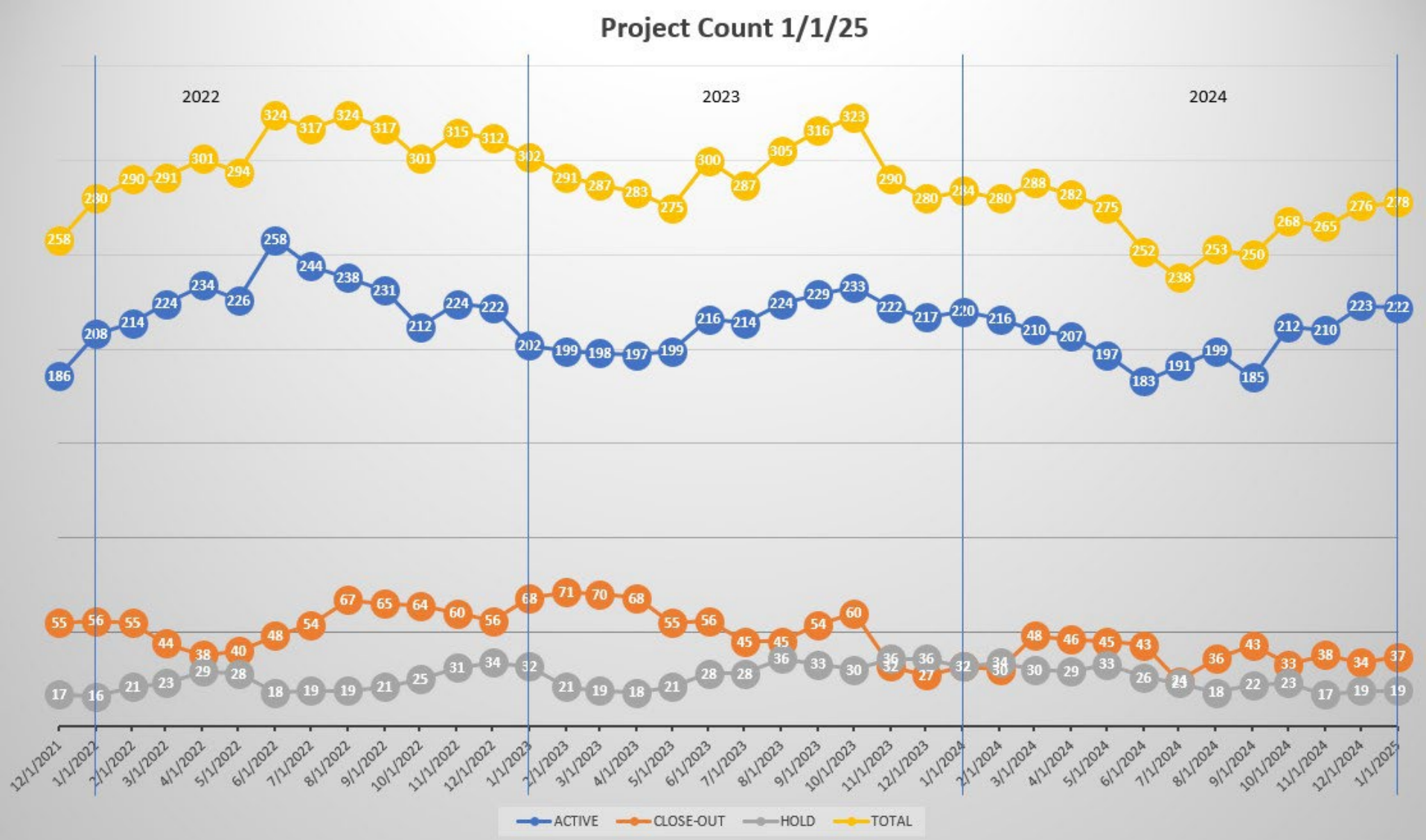
# PROJECTS BY TYPE



Current Projects Only  
does not include Completed Projects

- MEP Systems / Utility – 26%
- Office / Classroom – 25%
- Research – 10%
- Grounds / Infrastructure - 9%
- Capital Projects - 6%
- Life Safety / Code – 5%
- Building Envelope – 4%
- Retail / Restaurant – 4%
- Athletics – 3%
- Tech Fee - 3%
- Planning – 2%
- Access Control – 2%
- Mobile Carriers - 1%

# PDC CURRENT WORKLOAD





# **Additional Items**

---

# **ADDITIONAL STUDIES**

---

- Advertisement or Early Design
  - Research II
  - Student Union Renovations
  - Howard Phillips Hall
  - Library, Level 2 Design
  - Creative School for Children
  - Discovery and Innovation Hub, Daytona Campus
- Landscape Architecture
  - Campus Entries
  - Campus Core Landscaping (Student Union, JT Washington, Library)
  - Millican Landscape / Hardscape
  - Campus Wayfinding Refurbishment